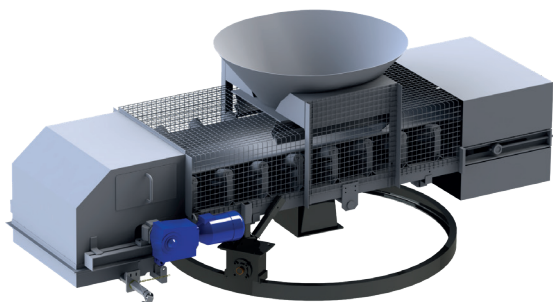


# COMPONENT & RETROFIT

## COMPONENT & EQUIPMENT CATALOG FOR CONCRETE PLANTS



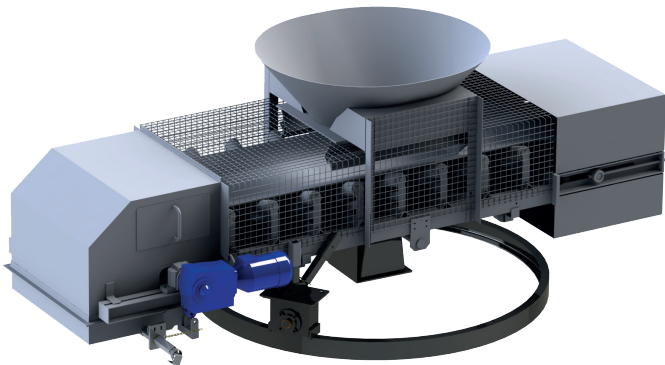
**SKAKO**  
**CONCRETE**  
- your concrete partner

# AGGREGATE HANDLING SYSTEMS



## Vibratory feeder

- Various sizes
- Adjustable angle
- Fine/coarse proportioning
- Material sensor
- Moisture sensor



## Belt conveyor

- Inclined belt conveyor
- High-body belt
- Weigh belt conveyor
- Feeding belt conveyor
- Distribution belt conveyor
- Concrete belt conveyor
- Material sensor
- Revolution indicator
- Safety devices



## Weigh hopper

- Round or angular shape
- Vibrator
- Wear-resistant lining
  - Rubber
  - PEHD



## Intermediate hopper

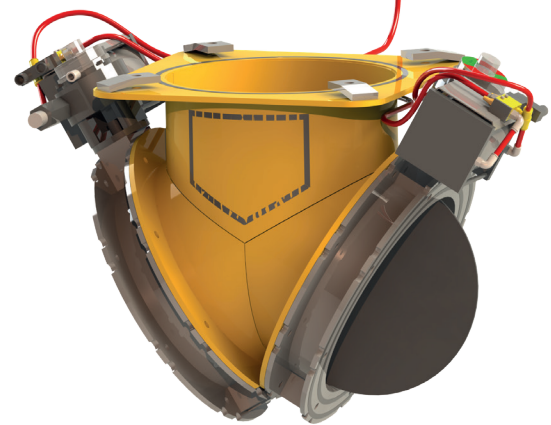
- Discharge gate
- Suspension in rails for discharge from bucket conveyor
- Suspension in platform for discharge directly from mixer

# AGGREGATE HANDLING SYSTEMS



## Skip hoist

- Complete skip hoist
- Guide rollers for bucket
- Slack wire & overload sensors
- Wire-break sensor
- Speed: 25 m/min.
- Weighing bridge
- Spare bucket and winch
- Skip hoist track, straight/bent



## Two-way gate

- Round or angular shape
- Pneumatically operated
- Wear-resistant lining
- For aggregates
- For powder
- Feeding of two mixers
- Position sensor



# PROPORTIONING SYSTEMS



## Water weigh hopper

- Complete with valve set
- Galvanized surface
- One-point or two-point suspension
- Hot & cold water
- Recycled or fresh water
- Discharge pump option
- Calibration system

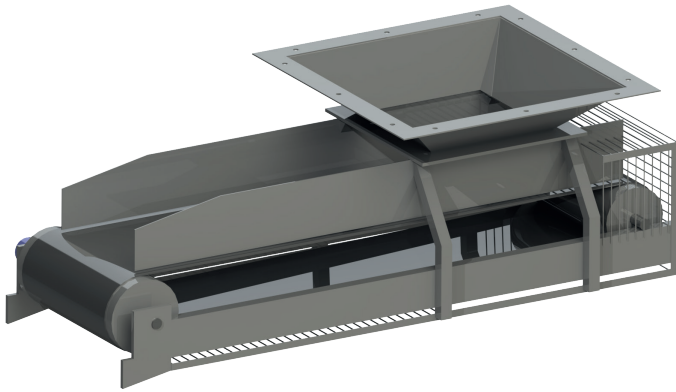


## Powder weigh hopper

- Round shape for optimum utilization
- Steam seal option
- One-point or three-point suspension
- Calibration system

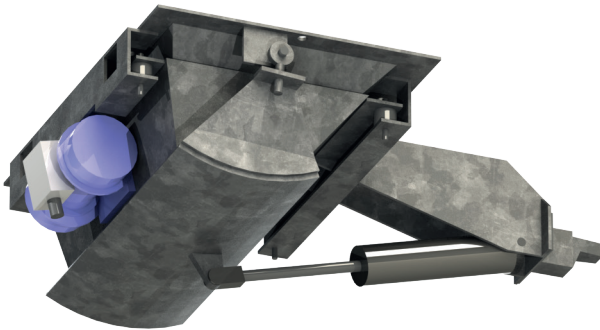


# PROPORTIONING UNITS



## Belt feeder

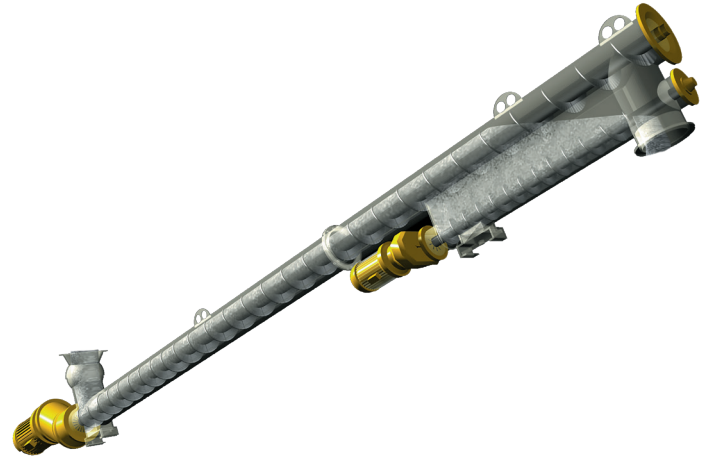
- Various sizes and lengths
- Ideal for light-clinker material
- Fine/coarse proportioning
- Volumetric proportioning option



## Proportioning gate

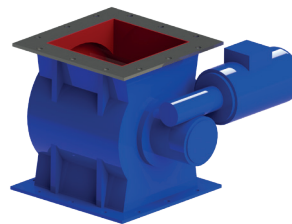
- Various sizes
- Vibrator option
- Fine/coarse proportioning
- Fast proportioning
- Minimal wear

# POWDER HANDLING SYSTEMS

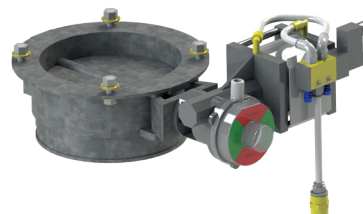


## Screw conveyor

- One-speed or two-speed screw conveyor
- Fine proportioning screw conveyor
- Flexible inlet joint
- Available for various types of materials:
  - Cement
  - Silica powder
  - Fine sand
  - Fly ash
  - Silica granulate
  - Lime stone



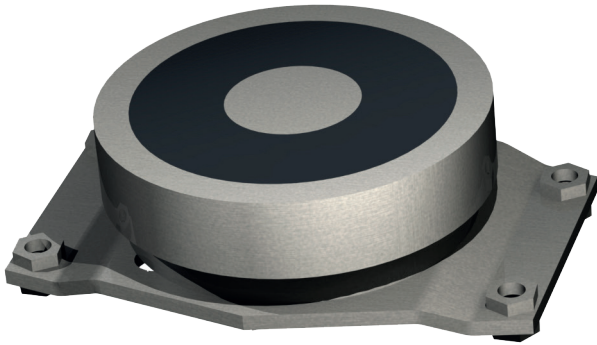
## Rotary gate



## Pneumatic butterfly valve

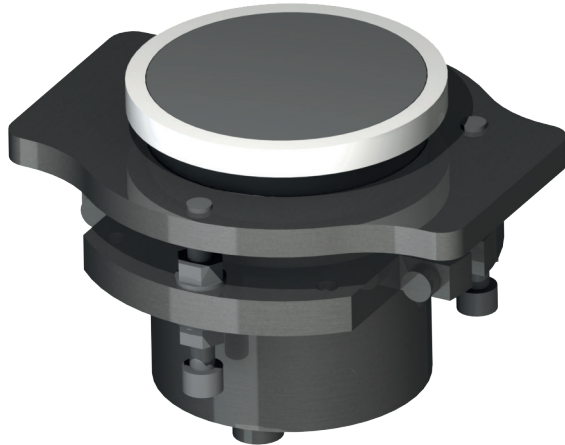
# MOISTURE MEASURING SYSTEMS

## MOISTURE CONTROL FOR MIXER



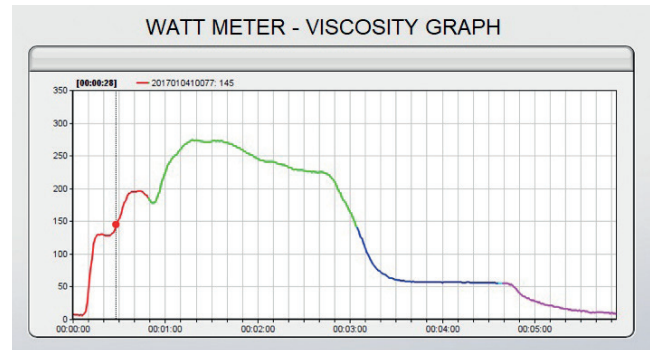
### AQUAMAT

- Conductivity measurement



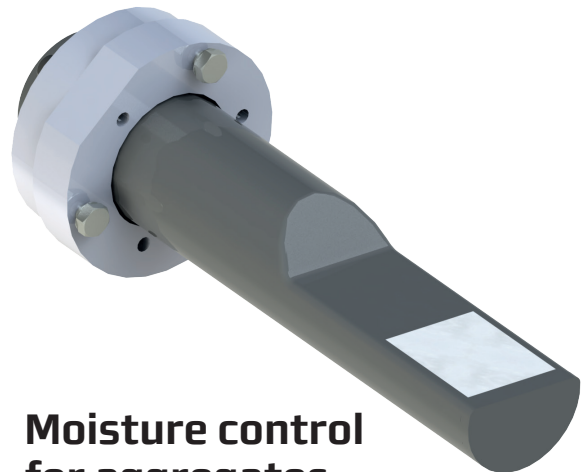
### Hydromix

- Microwave measurement



### Wattmeter

- Power consumption measurement



### Moisture control for aggregates

- Hydro Probe
- Aggregate water content
- Improves production efficiency

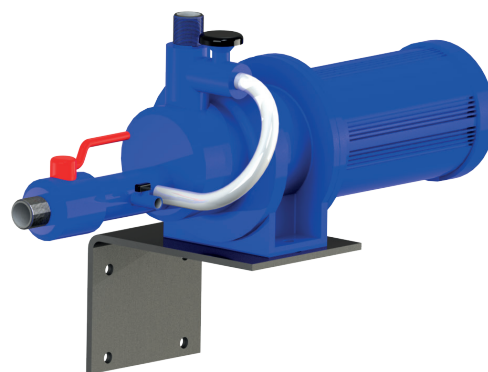
# ADMIX HANDLING SYSTEMS

## ADMIX/SLURRY SYSTEM control for mixer



### Electronic scales for liquids

- One to four cylinders of 6-50 litres
- Overflow limit switch
- Calibration system
- Check valves
- Washing system



### Admix gear pump

- Slurry diaphragm pump



### Admix/slurry tanks

- Various sizes
- Hose & pipe systems

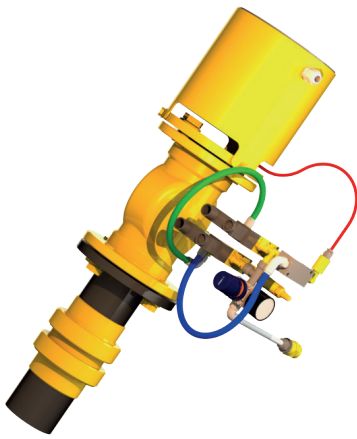


# MEASURING SYSTEMS



## Camera unit

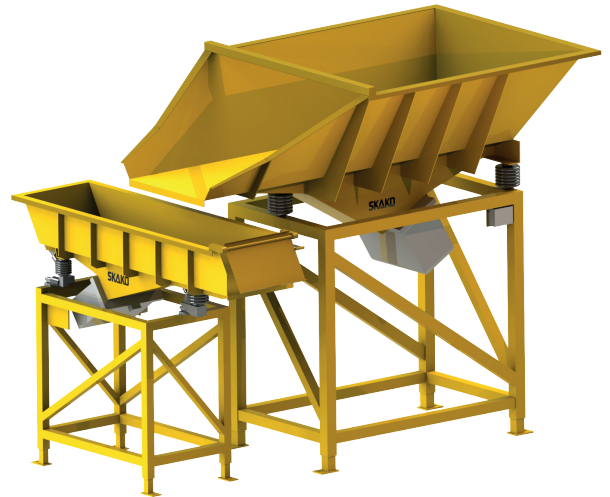
- Visual remote inspection of mixing process
- Lens protection
- Built-in cleaning
- Built-in light source



## Temperature measurement

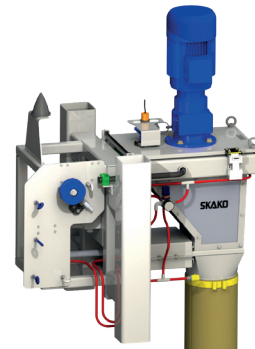
- Infrared temperature measurement
- Range: 0-50°C
- Automatic lens cleaning
- Protective valve

# FIBRE SYSTEMS



## Steel fibre proportioning system

- Fully automatic process
- Good distribution of fibres during proportioning
- Positive/negative weighing



## Synthetic fibre proportioning system

- Synthetic fibre rope cutter
- Adjustable fibre length
- Fully automatic process
- Good distribution of fibres during proportioning

# VARIOUS



## Colour system

- Powder pigment/granulate system
- Two to six big bags
- Pressurized weigh hopper
- Pneumatic conveyor hose
- Self-cleaning cyclone filter
- Optional bagging system for high cleanliness using water-soluble bags



## Filter for powder silos

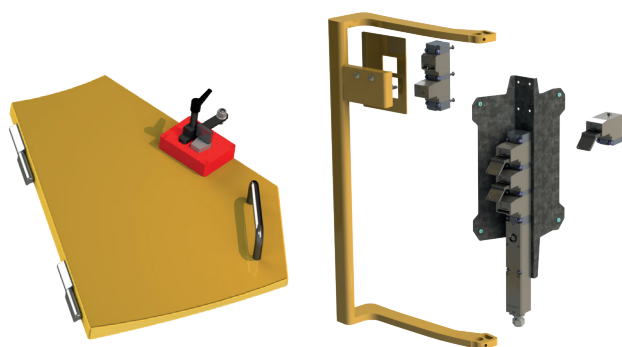
- Pneumatic silo top filter
- Safety valve
- Self-cleaning
- Stainless steel

# VARIOUS RETROFIT SOLUTIONS



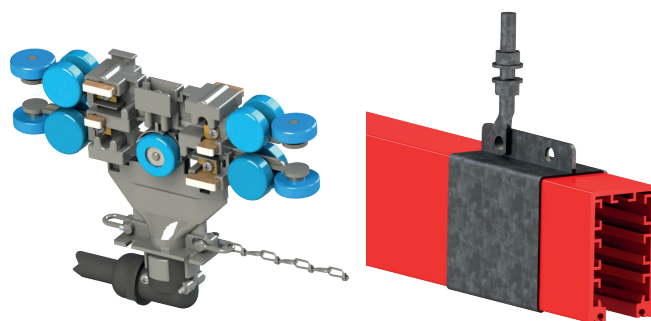
## Retrofit bucket conveyor

- Capacity from 750 to 3000 litres
- Duplo or mono rail
- Two-wheel drive or four-wheel drive
- Rotation discharge or bottom discharge
- Safety hoops



## Retrofit safety system

- Mechanical interlock safety system
- High safety performance
- Fits various mixer hatches



## Retrofit power rail

- Easy installation
- Improved communication
- Improved spare part availability
- Various types and sizes

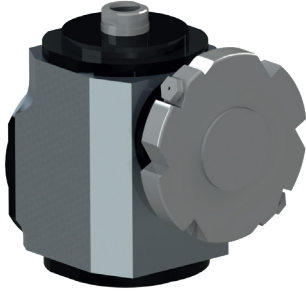


## Wireless communication

- Fits various bucket conveyors
- Increased range
- Reliable connection
- Easy installation



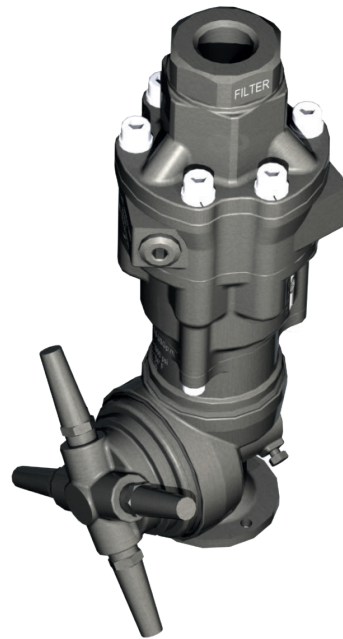
# VARIOUS RETROFIT SOLUTIONS



## Retrofit wash system

### High-pressure pump and washing unit

- Retrofit solution
- Fits most mixers
- High pressure
- Manual lance
- With water and temperature sensor
- Filter and safety valve
- High-pressure washing head
- 360° rotating spraying pattern



# SERVICE & SUPPORT



## SKAKO original spare parts assistance

We understand the importance of fast and reliable spare parts service. Our extensive inventory of original spare parts, together with our staff of experienced experts, is your guarantee that we can deliver on this promise.

You can conveniently reach SKAKO for spare parts service by phone or mail. Always insist on original SKAKO spare parts for guaranteed quality and performance.

Visit our webshop here: [www.skako.com/webshop](http://www.skako.com/webshop)

Monday-Thursday 07.30-15.30  
Friday 07.30-15.00

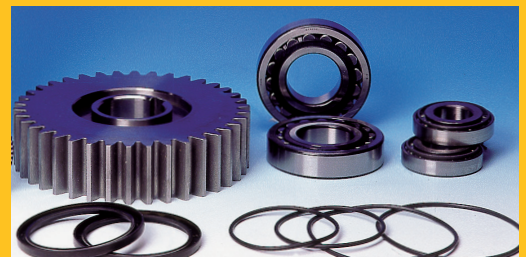
Tel.: +45 63 61 61 00  
Hotline: +45 70 26 26 45  
[webshop@skako.com](mailto:webshop@skako.com)  
[sparepart@skako.com](mailto:sparepart@skako.com)



## On-demand technical support

SKAKO customers can always choose to purchase the services and support they need on-demand.

- Plant performance
  - Plant review
  - Plant optimization
- Three-level service contracts
- Onsite service
- Onsite repair
- Calibration
- Own repair workshop
- Software backup and updates
- Telephone and online support



[www.skako.com](http://www.skako.com)

**SKAKO**  
**CONCRETE**  
- your concrete partner