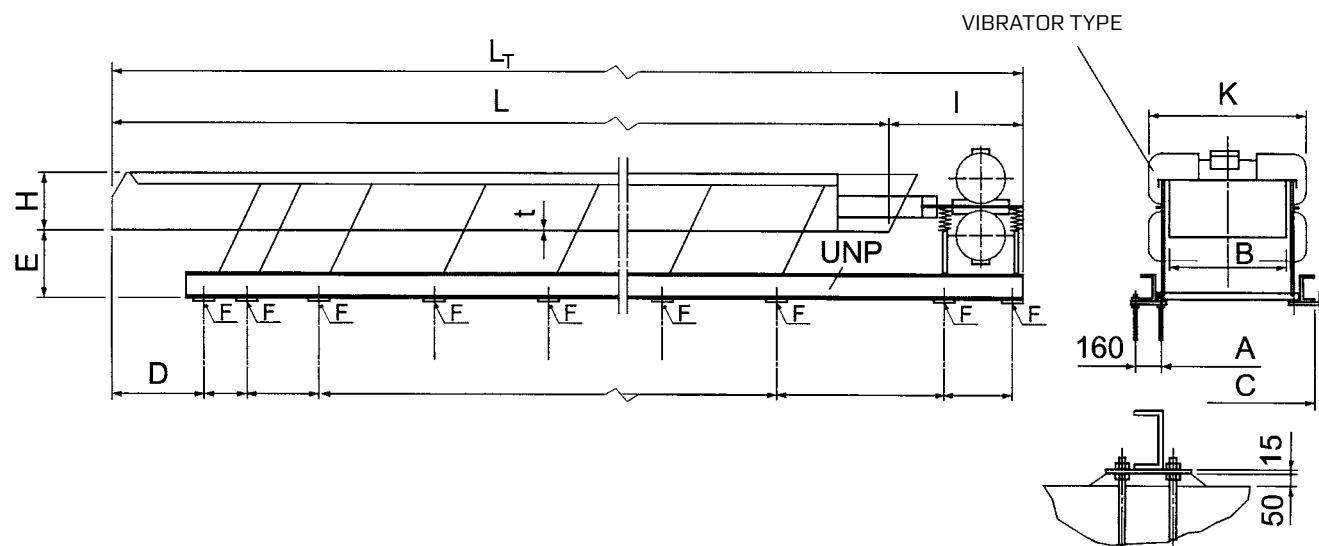


Conveyor Type **CCU-NL**



Type	INSTALLATION REQUIREMENTS (mm)																Vib.	Weight	
	B	H	L_T	$L^{(3)}$	t	A	C	D		E	F4)		I		K				UNP
								Max.	Actual		Kg ± Nb.	Max.	Actual	Max.	Actual				
CCU 040	400	160			3	435	640	600		480 670			750		850		120	1) 2)	
CCU 056	560	225			4	585	790	800		420 610			900		900		120	1) 2)	
CCU 080	800	280			5	830	1040	1000		360 550			1050		1000		140	1) 2)	
CCU 100	1000	280			5	1045	1260	1000		550			1050		1200		160	1) 2)	
CCU 125	1250	280			6	1300	1520	1000		550			1050		1450		180	1) 2)	

SKAKO VIBRATION retains all rights to change or improve the above specifications without notice.

03-10-2011

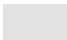
- 1) 4-pole Motors, 1500 rpm (25 Hz)
- 2) 6-pole Motors, 1000 rpm (16 Hz)
- 3) Max. length 21 m. Longer only by agreement with SKAKO VIBRATION
- 4) Dynamic forces, approximate values.

Please contact us for further information regarding exact dimensions and installations.

Conveyor Type **CCU-NL**

CAPACITY

Type	CAPACITY (m³/h)																													
	0	10	20	30	40	50	60	70	80	90	100	110	120	130	140	150	160	170	180	190	200	210	220	230	240	250	260	270	280	
CCU 040																														
CCU 056																														
CCU 080																														
CCU 100																														
CCU 125																														

 Recommended application

SKAKO VIBRATION retains all rights to change or improve the above specifications without notice.

Please contact us for further information regarding exact dimensions and installations.