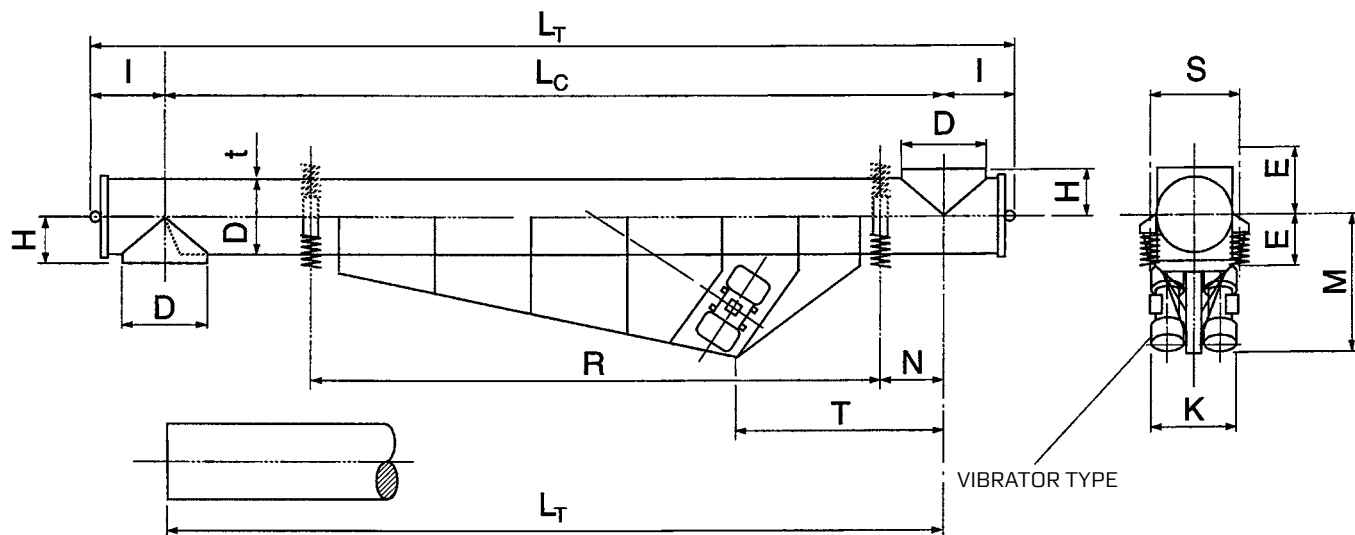


Conveyor Type **COU-NF**



Type	INSTALLATION REQUIREMENTS (mm)														Vib.	Weight	
	$D_{s)}$	L_T	$L_C = L$		t	E	H	I	K		M	N	R	S			T
			Max.	Actual					Max.	Actual							
COU 016	160		3400 4700		2		105	165	480					200		1) 2)	
COU 020 ₇₎	200		3700 5200		2		125	185	530					250		1) 2)	
COU 022	216		3900 5500		3		140	200	550					270		1) 2)	
COU 025 ₇₎	250		4200 5900		2,5		160	220	910					300		2) 3)	
COU 030 ₇₎	300		4600 6400		3		190	250	990					370		2) 3)	
COU 032	316		4700 6600 8100		3		200	260	1210					380		2) 3) 4)	
COU 040	398		7400 9000		4,5		250	310	1410					480		3) 4)	
COU 056	546		8700 10700		6,3		330	390	1520					640		3) 4)	

SKAKO VIBRATION retains all rights to change or improve the above specifications without notice.

03-10-2011

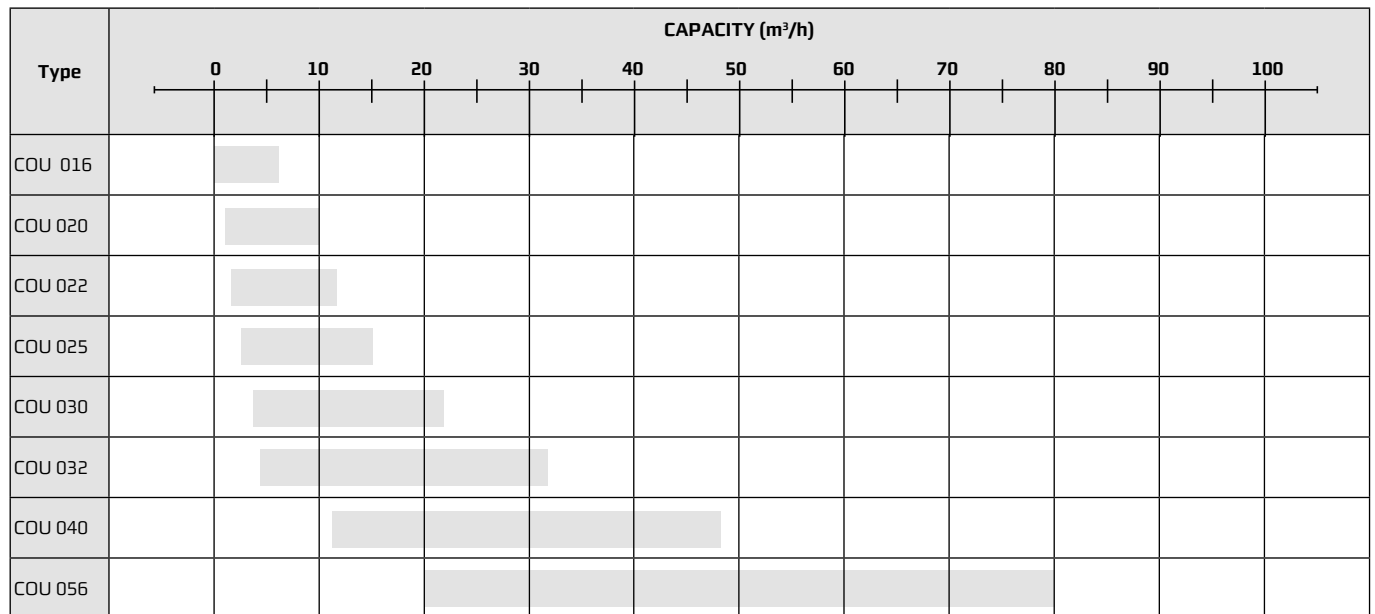
- 1) 2-pole Motors, 3000 rpm (50Hz)
- 2) 4-pole Motors, 1500 rpm (25 Hz)
- 3) 6-pole Motors, 1000 rpm (16 Hz)
- 4) 8-pole Motors, 750 rpm (12,5 Hz)

- 5) Inside Diameter
- 6) E: When conveyor is suspended
- 7) D: For stainless steel exec.

Please contact us for further information regarding exact dimensions and installations.

Conveyor Type **COU-NF**

CAPACITY



█ Recommended application

SKAKO VIBRATION retains all rights to change or improve the above specifications without notice

Please contact us for further information regarding exact dimensions and installations.