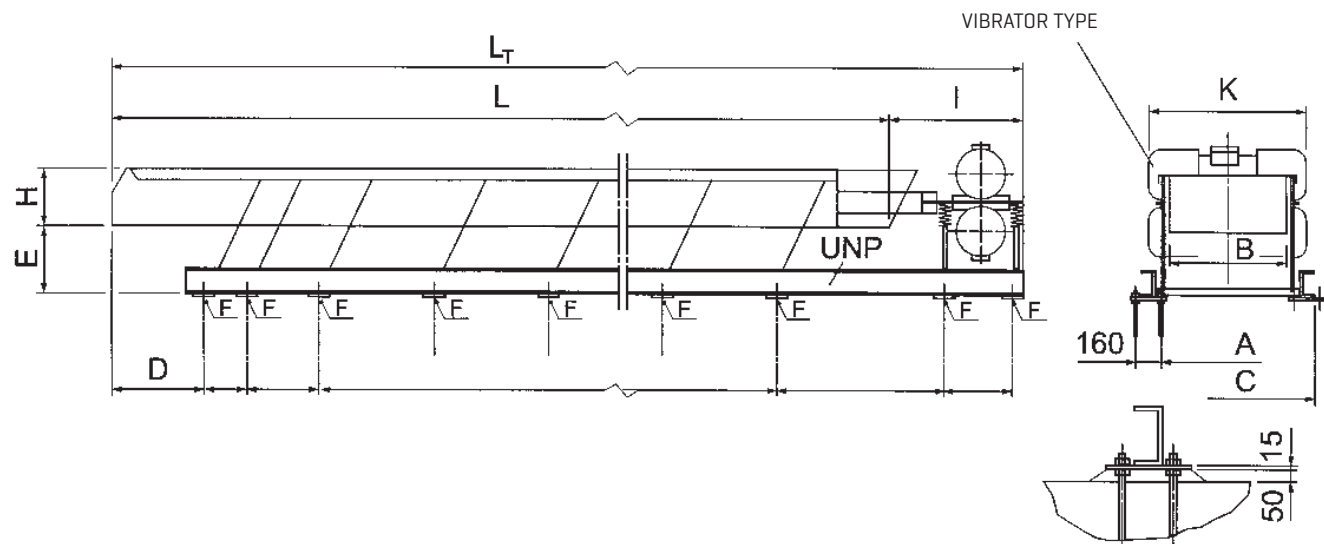


Conveyor Type CCU-NL



Type	INSTALLATION REQUIREMENTS (mm)														Vib.	Weight		
	B	H	L_T	$L^{3)}$	A	C	D		E	F ⁴⁾ Kg ± Nb.		I		K			UNP	
							Max.	Actual				Max.	Actual	Max.	Actual			
CCU 040	400	160			435	640	600		480 670			750		850		120	1) 2)	
CCU 056	560	225			585	790	800		420 610			900		900		120	1) 2)	
CCU 080	800	280			830	1040	1000		360 550			1050		1000		140	1) 2)	
CCU 100	1000	280			1045	1260	1000		550			1050		1200		160	1) 2)	
CCU 125	1250	280			1300	1520	1000		550			1050		1450		180	1) 2)	

SKAKO VIBRATION retains all rights to change or improve the above specifications without notice.

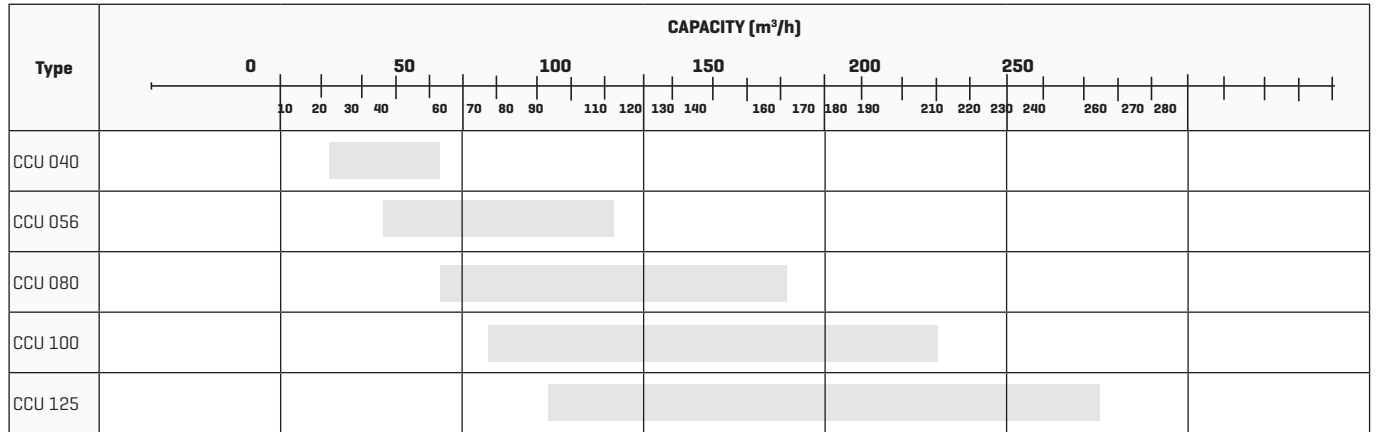
29-09-2022

- 1) 4-pole Motors, 1500 rpm [25 Hz]
- 2) 6-pole Motors, 1000 rpm [16 Hz]
- 3) Max. length 21 m. Longer only by agreement with SKAKO VIBRATION
- 4) Dynamic forces, approximate values.

Please contact us for further information regarding exact dimensions and installations.
SKAKO Vibration retains all rights to change the above specifications without notice.

Conveyor Type **CCU-NL**

CAPACITY



Recommended application

SKAKO VIBRATION retains all rights to change or improve the above specifications without notice.

Please contact us for further information regarding exact dimensions and installations. SKAKO Vibration retains all rights to change the above specifications without notice.