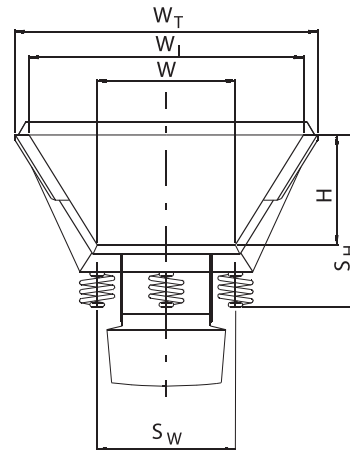
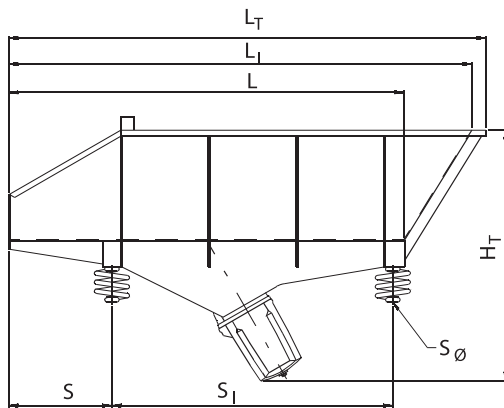


Feeder Type **FVE-1N**

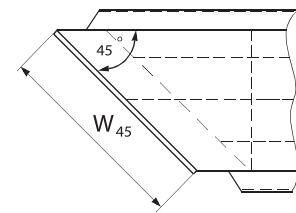
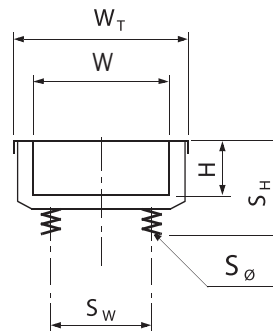
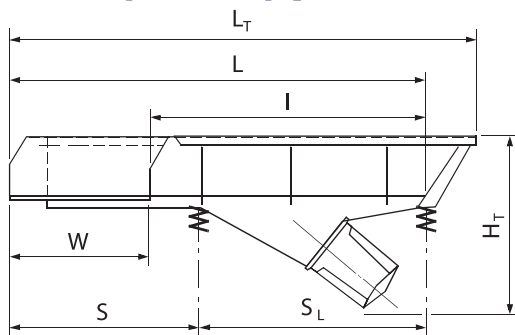


Feeder size is selected

- Primarily according to the required volumetric storage capacity or discharge dimensions of the transport containers.
- Secondly according to the size of product and composition of the material.

INSTALLATION REQUIREMENTS (mm)															
Type	Vibrator	W	H	L	W _I	W _T	H _T	L _I	L _T	S _W	S _H	S	S _I	S _ø	Weight (kg)
FVE 071/0125M1NL	8D	315	250	900	630	715	670	1060	1100	315	415	230	650	13	65
FVE 140/0250M1NL	8D	400	315	1120	800	900	770	1320	1370	400	530	230	820	13	90
FVE 280/0500M1NL	20D	500	400	1400	1000	1110	930	1650	1710	500	665	370	870	18	170
FVE 560/1000M1NL	50D	630	500	1800	1250	1380	1175	2110	2175	630	785	470	1280	18	350
FVE 1120/2000M1NL	100D	800	630	2240	1600	1750	1480	2640	2720	800	970	590	1620	22	680
FVE 2240/4000M1NL	2x100D	1000	800	2800	2000	2170	1800	3300	3380	-	-	-	-	-	1200

Conveyor Type **CCE-1NF**



Vibratory conveyor is selected

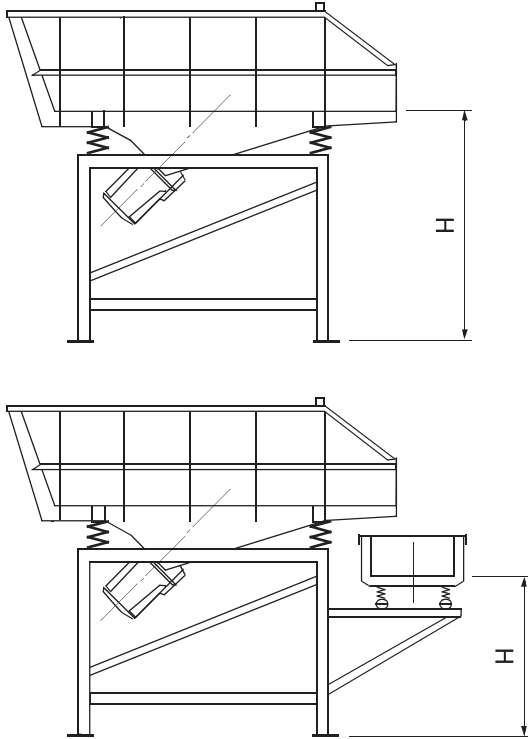
- According to width of the inlet opening of the succeeding machine.
- According to size of product.
- According to charge size.

INSTALLATION REQUIREMENTS (mm)															
Type	Vibrator	W	H	L	W ₄₅	I	W _T	H _T	L _T	S _W	S _H	S _L	S	S _ø	Weight (kg)
CCE 020/0080	4D	200	80	800	280	600	290	350	890	200	165	500	270	8	28
CCE 020/0100	4D	200	80	1000	280	800	290	370	1090	200	165	650	330	8	32
CCE 020/0120	4D	200	80	1200	280	1000	290	400	1290	200	165	755	425	8	36
CCE 020/0140	4D	200	80	1400	280	1200	290	430	1490	200	165	800	580	8	40
CCE 040/0080	8D	400	160	800	560	400	510	475	950	275	265	340	440	8	60
CCE 040/0120	8D	400	160	1200	560	800	510	515	1350	340	280	640	565	12	80
CCE 040/0160	8D	400	160	1600	560	1200	510	575	1750	340	280	965	615	12	100
CCE 050/0150	20D	500	160	1500	710	1000	615	560	1650	440	290	880	600	12	110
CCE 080/0150	50D	800	280	1500	N/A	700	920	710	1730	720	490	1000	500	12	350
CCE 100/0150	100D	1000	280	1500	N/A	500	1120	950	1730	920	540	1000	500	18	500

28-09-2017

Please contact us for further information regarding exact dimensions and installations.
SKAKO Vibration retains all rights to change the above specifications without notice.

Feeder Type **FVE-1N** Conveyor Type **CCE-1NF**

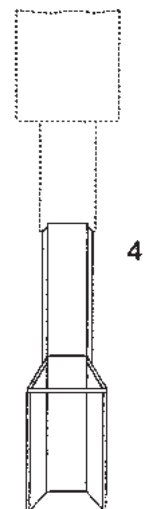
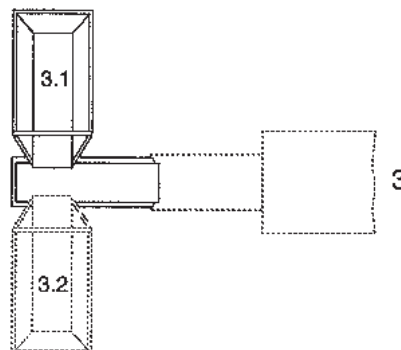
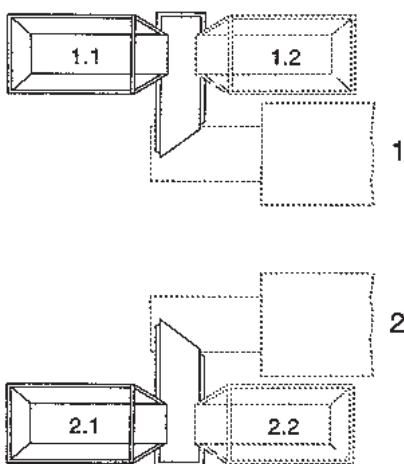


Lowest Working Height H	
Type	H
FVE 071/0125M1NL	450
FVE 140/0250M1NL	480
FVE 280/0500M1NL	560
FVE 560/1000M1NL	700
FVE 1120/2000M1NL	880
FVE 2240/4000M1NL	1100

Lowest Working Height H					
Type	071/0125	140/0250	280/0500	560/1000	1120/2000
CCE 020/0080	320	360	430	580	750
CCE 020/0100	340	360	430	580	750
CCE 020/0120	370	370	430	580	750
CCE 020/0140	400	400	430	580	750
CCE 040/0080	370	370	370	500	670
CCE 040/0120	410	410	410	500	670
CCE 040/0160	470	470	470	500	670
CCE 050/0150	450	450	450	500	670
CCE 080/0150	480	480	480	480	550
CCE 100/0150	720	720	720	720	720

Effective Volume for FV Feeders		
Type	Litres	kg/max.
FVE 071/0125M1NL	71	125
FVE 140/0250M1NL	140	250
FVE 280/0500M1NL	280	500
FVE 560/1000M1NL	560	1000
FVE 1120/2000M1NL	1120	2000
FVE 2240/4000M1NL	2240	4000

The **SKAKO VIBRATION** modular system of FVE feeders, produced in series, and standard vibratory conveyors provides the individual solution adapted to each client.



Please contact us for further information regarding exact dimensions and installations.
SKAKO Vibration retains all rights to change the above specifications without notice.