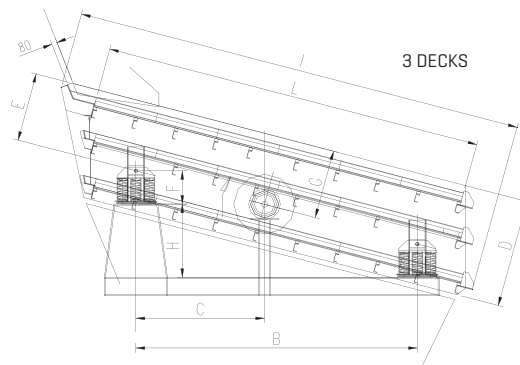
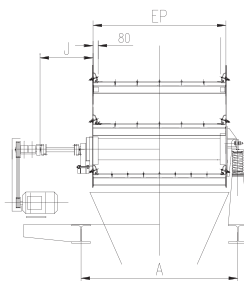


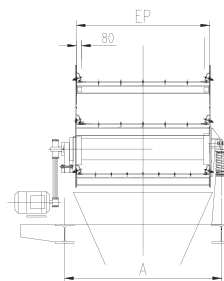
# Screen Type **S3S**



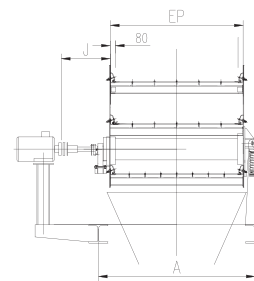
INTERMEDIATE BEARING UNIT



PULLY/BELT SYSTEM



DIRECT DRIVE



**INSTALLATION REQUIREMENTS (mm)**

TYPE	WEIGHT	EP	A	B	C	D	E	F	G	H	I	J	L	SCHAFT
<b>S3S 125/0400 M1I</b>	3660	1250	1625	3000	1506	1750	1115	480	1115	803	5125	790	4500	CH 90
<b>S3S 125/0500 M1I</b>	4120	1250	1625	3480	1506	1750	1115	480	1115	803	6125	790	5000	CH 90
<b>S3S 160/0400 M1I</b>	4940	1600	1975	3000	1506	1750	1115	480	1115	803	5150	790	4000	CH 90
<b>S3S 160/0450 M1I</b>	5250	1600	1975	3000	1260	1750	1115	480	1115	803	5650	790	4500	CH 100
<b>S3S 160/0500 M1I</b>	5724	1600	1975	3480	1502	1750	1115	480	1115	932	6150	790	5000	CH 100
<b>S3S 180/0450 M1I</b>	5800	1800	2175	3000	1260	1750	1115	480	1115	803	5650	790	4500	CH 100
<b>S3S 180/0500 M1I</b>	6050	1800	2175	3480	1502	1750	1115	480	1115	932	6150	790	5000	CH 100
<b>S3S 180/0600 M1I</b>	6945	1800	2175	4445	1985	1750	1115	480	1115	1191	7150	790	6000	CH 100
<b>S3S 200/0500 M1I</b>	7010	2000	2375	3480	1502	1750	1115	480	1115	932	6150	790	5000	CH 120
<b>S3S 200/0600 M1I</b>	7450	2000	2375	4445	1985	1750	1115	480	1115	1191	7150	825	6000	CH 140
<b>S3S 200/0700 M1I</b>	8830	2000	2375	5410	2468	2000	1370	480	1310	1450	8200	825	7000	CH 140
<b>S3S 220/0600 M1I</b>	9250	2200	2575	4445	1985	2000	1370	480	1310	1191	7200	825	6000	CH 140
<b>S3S 220/0700 M1I</b>	10120	2200	2575	5410	2468	2000	1370	480	1310	1450	8200	825	7000	CH 140
<b>S3S 250/0600 M1I</b>	11200	2500	2875	4445	1985	1600	1370	480	1310	1191	7200	825	6000	CH 140
<b>S3S 250/0700 M1I</b>	12890	2500	2875	5410	2468	2000	1370	480	1310	1450	8200	790	7000	CH 140
<b>S3S 280/0700 M1I</b>	18280	2800	3500	4500		2700	1950	540	1800	1215	8300	7015	7000	2 CH 120
<b>S3S 280/0800 M1I</b>	19930	2800	3500	5500		2700	1950	540	1800	1474	9300	1015	8000	2 CH 160
<b>S3S 300/0800 M1I</b>	20430	3000	3700	5500		2700	1950	540	1800	1474	9300	1015	8000	2 CH 160

SCHAFT	MOTOR	SCHAFT	MOTOR	SCHAFT	MOTOR
CH 90 - 750 tr/mn	15 Kw	CH 120 - 750 tr/mn	22 Kw	2 CH 120 - 750 tr/mn	45 Kw
CH 90 - 1000 tr/mn	11 Kw	CH 120 - 1000 tr/mn	18,5 Kw	2 CH 120 - 1000 tr/mn	37 Kw
CH 90 - 1500 tr/mn	7,5 Kw	CH 120 - 1500 tr/mn	11 Kw	2 CH 120 - 1500 tr/mn	22KW
CH 100 - 750 tr/mn	18,5 Kw	CH 140 - 750 tr/mn	30 Kw	2 CH 160 - 750 tr/mn	60 Kw
CH 100 - 1000 tr/mn	15 Kw	CH 140 - 1000 tr/mn	22 Kw	2 CH 160 - 1000 tr/mn	45 Kw
CH 100 - 1500 tr/mn	9 Kw				

22-05-2013

Please contact us for further information regarding exact dimensions and installations.  
**SKAKO Vibration** retains all rights to change the above specifications without notice.