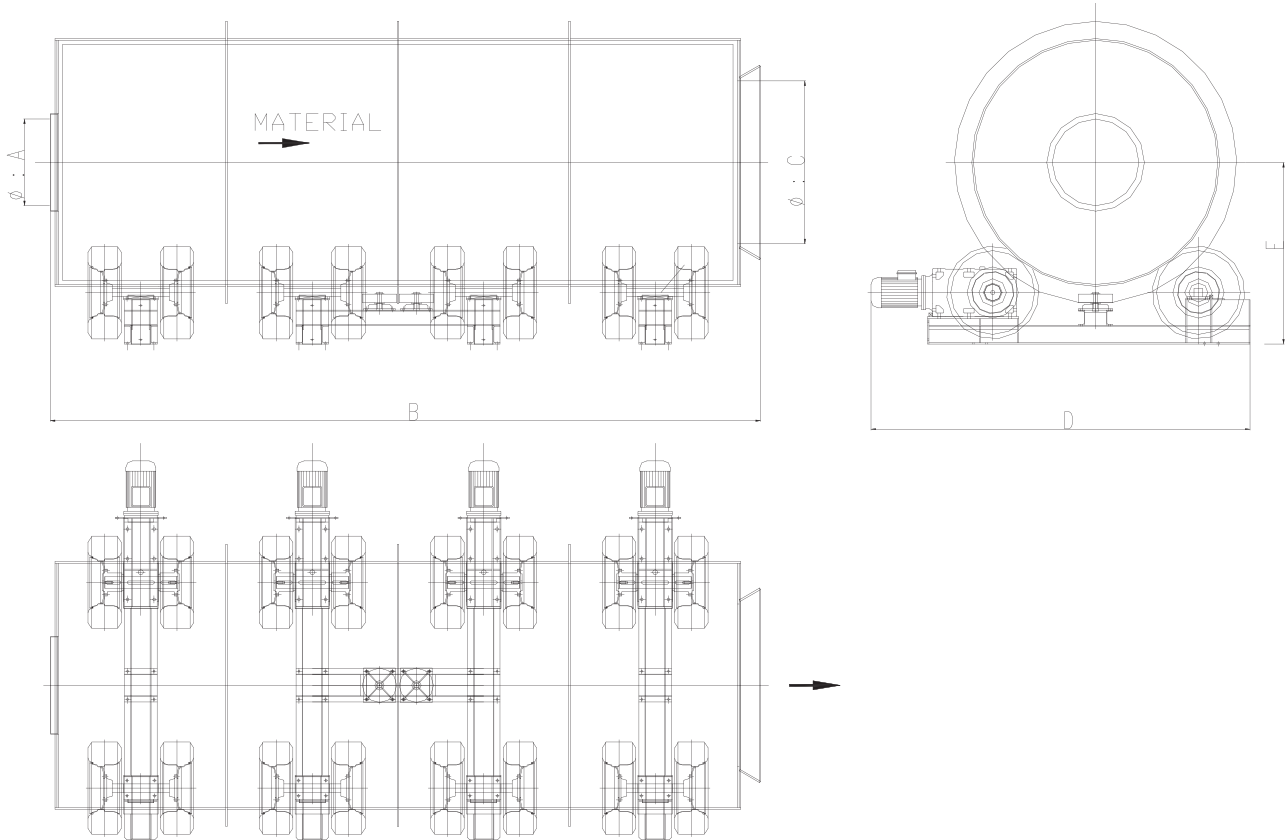


Washing Drum Type SF



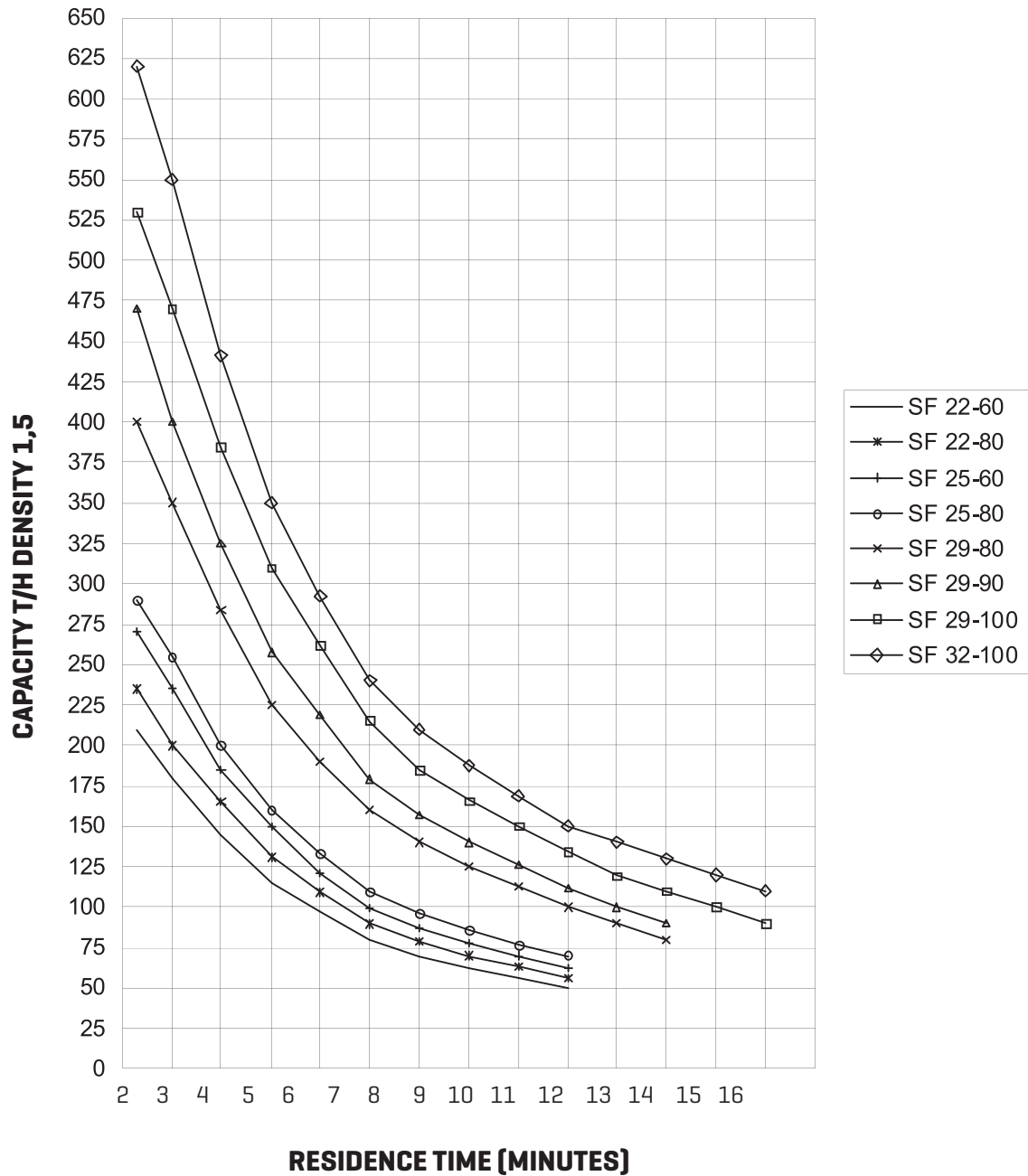
Type	Capacity Kg	Size	Ø Drum D	Length B	Width D	Ø Inlet A	Ø Outlet C	Water M ³ /h	Nb m ³ /h	Rotation T/mm	KW Min-Max	Weight Tons
SF 22-60	80-200	0-220	2220	6000	3700	1250	700	80-300	12	8-10	30-45	18
SF 22-80	90-240	0-220	2220	8000	3700	1250	700	90-360	16	8-10	44-60	22
SF 25-60	100-250	0-250	2540	6000	4100	1500	850	100-370	12	7,5-9	44-66	23
SF 25-80	100-280	0-250	2540	8000	4100	1500	850	100-400	16	7,5-9	66-88	30
SF 29-80	120-380	0-300	2860	8000	4360	1900	1000	120-550	16	7-8,5	90-120	34
SF 29-90	150-430	0-300	2860	9000	4360	1900	1000	150-650	16	7-8,5	90-148	37
SF 29-100	150-500	0-300	2860	10000	4360	1900	1000	150-750	20	7-8,5	110-185	42
SF 32-100	200-650	0-350	3180	10000	4500	2100	1200	650-950	20	7-8	150-225	51

SKAKO VIBRATION retains all rights to change or improve the above specifications without notice

14-10-2014

Please contact us for further information regarding exact dimensions and installations.
SKAKO Vibration retains all rights to change the above specifications without notice.

Washing Drum Type SF



Please contact us for further information regarding exact dimensions and installations.
SKAKO Vibration retains all rights to change the above specifications without notice.