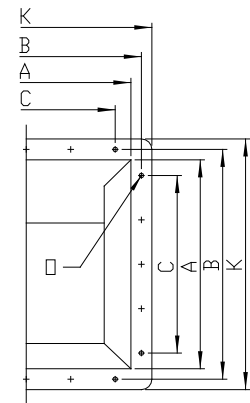
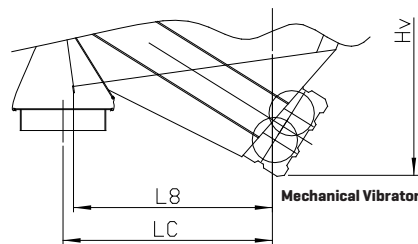
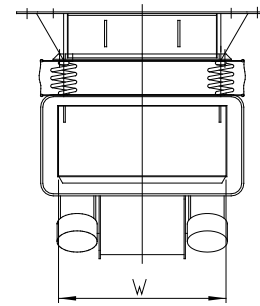
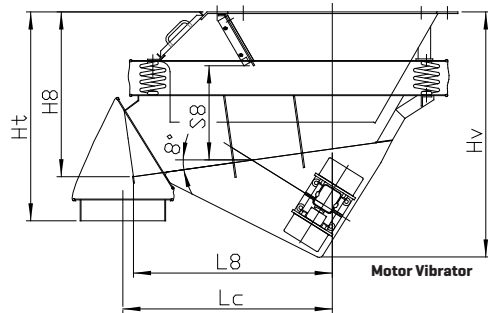
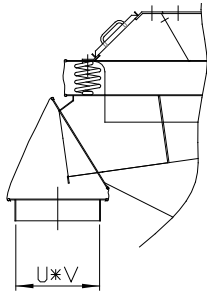


Enclosed Vibratory Feeder Type **FCU/FCR-4NL** with Motor/Mechanical Vibrator



| Feeder Size W/L ₀ | Capacity m ³ /h 2) | Dimensions trough Profile (mm) | | | Vibrator Type 1) | Weight kg Excl. wear liner | Installation Requirements (mm) | | | | | | | | | | Diameter (Ø) | Quantity (Q) | UxV |
|---------------------------------|-------------------------------------|--------------------------------------|--------------|---------------|------------------------|--|-----------------------------------|------|----------------|----------------|----------------|----------------|----------------|----------------|-------|------|--------------|--------------|----------|
| | | 8° | Width (W) | Height (H) | | | Wear Lining 3) | 3 | L _c | H ₈ | H _v | L ₈ | H ₀ | S ₈ | A | B | | | |
| 040/0050 | 51 | 400 | 160 | 3 | 400/15 | 200 | 500 | 500 | 730 | 450 | 380 | 200 | 500 | 580 | 450 | 650 | 18 | 8 | 200x460 |
| 040/0100 | 51 | 400 | 160 | 3 | 500/15 | 250 | 1000 | 570 | 810 | 950 | 450 | 200 | 500 | 580 | 450 | 650 | 18 | 8 | 200x460 |
| 056/0071 | 102 | 560 | 225 | 4 | 710/15 | 285 | 735 | 710 | 930 | 680 | 560 | 360 | 710 | 800 | 610 | 870 | 22 | 8 | 280x620 |
| 056/0125 | 102 | 560 | 225 | 4 | 1100/15 | 335 | 1250 | 840 | 1050 | 1180 | 660 | 360 | 710 | 800 | 610 | 870 | 22 | 8 | 280x620 |
| 080/0100 | 221 | 800 | 315 | 5 | 1400/15 | 515 | 1000 | 1000 | 1200 | 950 | 790 | 450 | 1000 | 1100 | 2x425 | 1200 | 22 | 12 | 400x900 |
| 080/0160 | 196 | 800 | 315 | 5 | 2400/15 | 600 | 1600 | 1100 | 1300 | 1550 | 870 | 450 | 1000 | 1100 | 2x425 | 1200 | 22 | 12 | 400x900 |
| 100/0125 | 349 | 1000 | 400 | 5 | 2400/15 | 860 | 1250 | 1220 | 1420 | 1190 | 930 | 540 | 1250 | 1400 | 2x525 | 1490 | 27 | 12 | 500x1100 |
| 100/0200 | 354 | 1000 | 400 | 5 | 3000/1 | 1200 | 2000 | 1230 | 1590 | 1900 | 1030 | 540 | 1250 | 1400 | 2x525 | 1490 | 27 | 12 | 500x1100 |
| 125/0160 | 476 | 1250 | 500 | 6 | 3000/1 | 1680 | 1600 | 1630 | 1950 | 1520 | 1350 | 800 | 1600 | 1750 | 2x650 | 1900 | 27 | 12 | 620x1350 |
| 160/0200 | 638 | 1600 | 500 | 6 | 10000/075 | 3270 | 2000 | 2010 | 2470 | 1900 | 1640 | 1010 | 2000 | 2200 | 2x850 | 2400 | 27 | 12 | 800x1700 |

- 1) See appropriate data sheets for vibrators.
- 2) The capacities stated are valid for naturally moist sand 0-3 mm and including wear liners.
Be aware that the capacities are stated in m³/h.
- 3) L_c dimensions are valid for naturally moist sand 0-3 mm.
For coarse materials L_c is increased by 50-100 mm.

Please contact us for further information regarding exact dimensions and installations.
SKAKO Vibration retains all rights to change the above specifications without notice.

Enclosed Vibratory Feeder Type **FCU/FCR-4NL** with Motor/Mechanical Vibrator

Feeder capacity can be regulated in 3 ways:

By adjusting the trough gate

Adjusting the trough gate allows a continuously variable regulation of the depth of material on the vibratory trough.

By adjusting the eccentric weights

The stroke can be regulated by adjusting the eccentric weights of the vibrator.

By adjusting the working frequency

By means of a frequency inverter or hydraulic drive, it is possible to achieve an infinite variation from appr. 25% to 100% of the preset capacity.

Feeder size is chosen on the basis of:

Primarily, capacity in cubic metres per hour (m³/h)

Bulk densities in the range 0,3-5t/m³ have an insignificant influence on the capacity of feeders with motor/mechanical vibrators. The indicated capacities are calculated at a bulk density of 1,5 t/m³.

Secondarily, particle size and material characteristics

Normally the indicated capacities are achievable when particle sizes are no larger than 1/10th of the trough width.

The feeders are able to handle considerably coarser materials, but with reduced capacity.

To avoid jamming, materials containing lump sizes larger than 1/3rd of the maximum gate opening should only be handled in larger feeders.

Feeder Design:

All standard feeder sizes are available in a short version; the smaller sizes are also available in a long version for materials with a low slope angle.

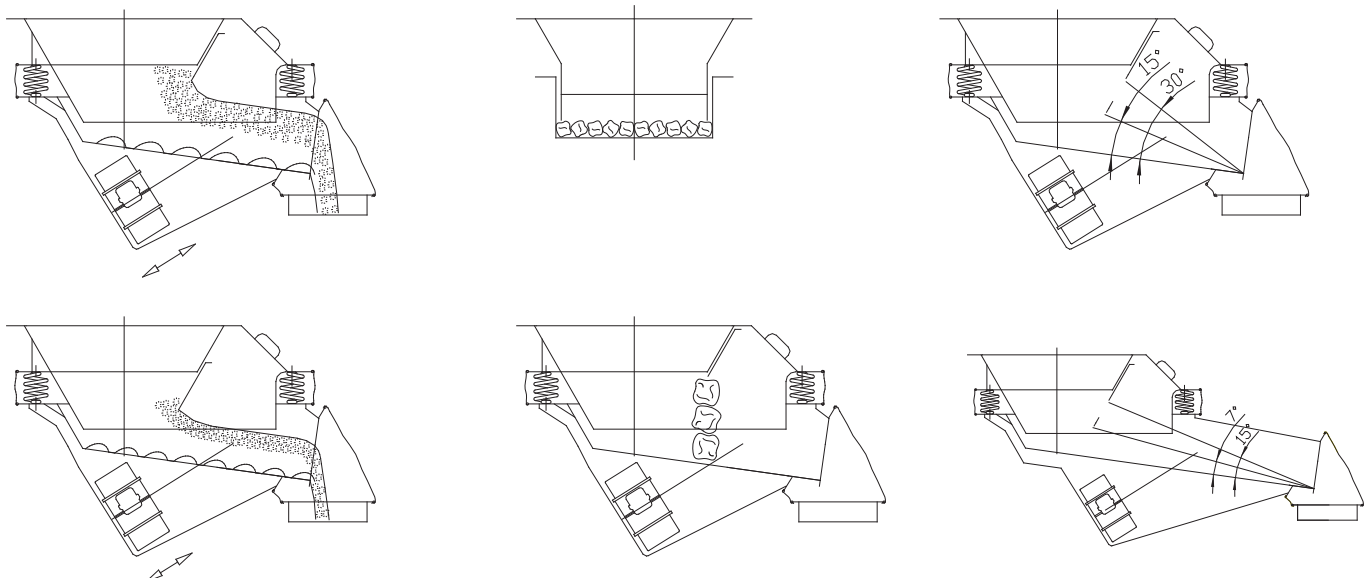
At 8° downslope the following minimum slope angels at maximum and minimum gate opening are obtained:

Short feeders: approximately 40° and 25°, respectively.

Long feeders: approximately 25° and 15°, respectively.

Vibratory troughs may be lined with e.g rubber, PEHD, PUR, steel etc. The type of liner is selected according to the nature of the material to be handled [e.g sticky, corrosive or very abrasive].

Feeders with no wear lining are appropriate for proportioning from e.g rarely emptied silos. The material may be slightly to moderately abrasive, e.g vegetables, gravel and sand.



Please contact us for further information regarding exact dimensions and installations.
SKAKO Vibration retains all rights to change the above specifications without notice.